

Department of Geology

Dr. Christina Hulbe Associate Professor
1721 SW Broadway 503-725-3388 vox
Portland, Oregon 97201 503-725-3025 fax

Cramer Hall room 17 O chulbe@pdx.edu



31 October 2008

Selection Committee,

Andrew Fountain and I propose to host the 2012 SCAR/COMNAP and associated meetings in Portland, Oregon. The Portland State University administration is enthusiastic about this opportunity and has pledged to work with us on all aspects of meeting organization, including providing \$100,000 in financial support and a \$25 hotel room rate for up to 100 participants.

Portland State is Oregon's largest university. We began as an extension center for veterans returning from WWII and are now an engaged urban university with a diverse student population. We maintain a growing research portfolio while staying true to our motto, "Let Knowledge Serve the City."

Portland is a vibrant, accessible city with a strong environmental stewardship ethic. We're the city that replaced a four-lane highway with a riverfront park, takes pride in its 5,000-acre urban forest, and adopted its own strategy to reduce greenhouse gas emissions way back in 1993. Our University, government agencies, and private sector are all recognized for commitment to and innovation in sustainable practices and development. We are proud of Portland and welcome the opportunity to show it off while providing an enriching experience for meeting attendees.

Travel to and around Portland is easy. Portland International Airport has direct connections to major airport hubs throughout the United States, as well to Europe, and Asia. Portland's public transportation system is extensive and all components of the system are free in a downtown "fareless square." Cultural attractions and distinctive neighborhoods are easily accessible both on foot and by public transportation. Volcanoes, the Pacific coast, the Willamette Valley wine country, and old growth forests are all within reach.

While Portland's reputation is for rain, the skies clear in May and we enjoy dry, mild weather through the summer. On an average July day, our high temperature is 26.7 C (80 F) and the low is 14.4 C (28 F). The average total July rainfall is 16 mm.

Andrew and I have a range of event organizing and hosting experience, including thematic meetings of various scales, the International Glaciological Society Symposium on Ice and Water Interaction in 2004, and department fundraising events. Details regarding Portland and our planning goals requested by the selection committee are outlined on the following pages.

Sincerely,

A handwritten signature in dark ink that reads 'Christina Hulbe'.

1. Venues

- a. **Hilton Portland & Executive Tower in downtown Portland** We propose to host the SCAR business and satellite meetings, COMNAP meetings and exhibition, and Open Science Conference at this venue.
 - i. Largest hotel in Oregon
 - ii. **Meeting space:** a total of 66,000 square feet, configurable with full AV support
 1. Grand ballroom: 1,500 theater-style seating capacity
 2. Meeting rooms: capacity up to 20 concurrent sessions in rooms seating 50 to 760; may be configured for a variety of needs (U shape for discussion or operations center, lecture-style, etc.). Please see the attached room capacity chart.
 - iii. **guest rooms**
 1. 782 guest rooms, 446 with two beds; \$200/night typical rate in 2008
 2. Suites are available in the Executive Tower.
 - iv. **Transportation:** The Hilton is adjacent to the downtown hub of Portland's transportation system. A parking garage is also available.
 - v. **Environment:** Green Seal certified
- b. Major venue alternatives are available at the Oregon Convention Center, also within a few minutes walking distance of a public transit hub.
- c. **Portland State University**
 - i. We propose to host the SCAR delegates meeting on the Portland State University campus, where a variety of configurable meeting spaces are available. Our preference is Hoffman Hall, a state-of-the-art lecture/classroom facility with a complete suite of AV equipment, including multiple projectors and document camera. Conference facilities are also available at University Place.
 - ii. Some social events may also be arranged on the Portland State campus.
 - iii. PSU is located in downtown Portland and is on the light rail, streetcar, and several bus lines.
 - iv. Our campus is a 5 to 10 minute walk from the Hilton and other downtown hotels.

2. Management plan

- a. **Local organizing committee:** Christina Hulbe and Andrew Fountain will co-chair the local organizing committee.
 - i. Dr. Hulbe currently serves as a US representative to the SCAR Physical Sciences SSG. Dr. Fountain currently serves on the US Polar Research Board. Both have prior experience with event planning on a variety of scales.
 - ii. Other committee members will be recruited from administrative ranks at Portland State and from regional universities (for example, the University of Washington in Seattle and Oregon State University).

- b. Financial Management**
 - i. Portland State University has pledged \$100,000 in financial support for the meeting. These funds will be contributed directly by the University and raised from regional government and the private sector.
 - ii. Budgeting will be accomplished with the assistance of research accountants at Portland State University.
 - iii. Costs will be kept at a minimum by taking advantage of event services at the primary venue and institutional support at Portland State. The latter includes assistance with budgeting, release time for faculty involved in event planning, and employment of work-study students.
- 3. Technical and administrative support
 - a. Technical**
 - i. All meeting venues either are or can be equipped with standard computer equipment and software required for lecture presentations. In some cases this may come at a small additional cost.
 - ii. The Portland Hilton has standard business center facilities for such needs as wireless internet access, photocopying, and fax transmission. Such facilities will also be available at Portland State for the SCAR delegates meeting.
 - b. Administrative**
 - i. Portland State University will provide administrative support for pre-event planning. Secretarial support can be arranged during the SCAR/COMNAP and Open Science meetings if required and will be provided for the SCAR Delegates meeting.
 - c. Public communications**
 - i. The Portland State University Office of University Communications will support all media-related activities.
 - ii. We have experience engaging both local and regional media with environmental and science news stories.
 - iii. We are well connected with regional educational institutions at all levels, including the Oregon Museum of Science and Industry. We anticipate developing programs to invite educators to plenary sessions of the Open Science Conference.
- 4. Conference Management
 - a. Major activities such as venue, accommodation, and social schedule, will be self-managed by the local organizing committee and a support staff of university employees (professional and student). We have had positive experiences with student employees taking leadership roles in event planning and plan implementation.
 - b. The local organizing committee will work with the SCAR scientific program committee to ensure an efficient and effective process in room and schedule planning.
 - c. In the interest of cost control, a professional conference management company will not be contracted.

5. Travel and Accommodation

- a. **Air:** direct international flights connect with Amsterdam, Frankfurt, Mexico City, Tokyo/Narita, and Vancouver (as well as Hawaii).

- i. typical roundtrip airfares at the time of this writing include international:

PDX:AMS	\$800
PDX:FRA	\$800
PDX:MEX	\$600
PDX:NRT	\$1200
PDX:LHR	\$700 (not direct)
PDX:CDG	\$1000 (not direct)

domestic:

PDX:DEN	\$200
PDX:EWR	\$400
PDX:IAH	\$400
PDX:LAX	\$250
PDX:ORD	\$350

- ii. Light rail is the easiest way to travel from the airport to downtown. The airport train platform is easy to navigate, no transfers are required, and the 40 minute trip to downtown Portland costs \$2.05 (in 2008).
- iii. Shuttles and taxis are also available, at about 10 times the cost of public transportation.
- iv. Amtrack connections from Seattle/Tacoma may also be an attractive option for some travelers.

- b. **Public transportation:** Portland's public transportation system is among the best in the nation, with a downtown streetcar, light rail, and buses. These services all run free of charge in a downtown fareless zone that embraces the meeting venues and major accommodation sites.

c. **Accommodation**

- i. Hilton Portland: main meeting venue
1. 782 guest rooms, 446 with two beds; \$150 to 200/night typical rate in 2008
 2. Suites are available in the Executive Tower.
- ii. Low-cost option: Portland State University has offered pledged to provide up to 100 spaces for shared accommodation at about \$25/night per person at University Place, its on-campus conference facility. University Place is within easy walking or streetcar/light rail distance of the Hilton. These rooms would be allocated via an application process.
- iii. Portland is a major tourist destination and as a result, a range of hotel options, from budget to boutique, is available with easy access to the meeting venues. Standard chain hotels (Embassy Suites, Residence Inn, etc.) provide hundreds of rooms in downtown Portland. Some

alternative examples within walking distance of the main venue are listed here (2008 rates/night):

1. \$50 to 100
University Place (PSU conference center, 235 rooms)
Econolodge (motel near Portland State, 20 rooms)
Travelodge (motel near Portland State, 40 rooms)
Value Inn (motel near Portland State)
Hostelling International: two hostels are accessible
2. \$100 & up
Ace Hotel (boutique, 4 floors, 79 rooms)
The Benson Hotel (historic, 14 floors, 287 rooms)
3. \$150 & up
The Heathman (10 floors, 150 rooms & suites)
Hotel 50 (new on the riverfront, 5 floors, 140 rooms)
Hotel Lucia (boutique, 9 floors, 127 rooms)
Mark Spencer Hotel (kitchenettes, 6 floors, 101 rooms)
The Paramount (15 floors, 154 rooms)
4. Thousands of rooms are available in the Convention Center district, a short light rail trip from downtown.

6. Social program

- a. SCAR SSG/COMNAP icebreaker at Hilton; Oregon “wine & soils” tasting led by a member of our Geology faculty
- b. OSC Welcome at Hilton; we will seek sponsorship from one of Portland’s numerous micro-breweries for this event
- c. Banquet: A range of venues are available in the Portland area, our favorites are:
 - i. Oregon Museum of Science & Industry: one of the top science museums in the United States. The museum can accommodate 750 banquet guests and OMSI’s caterer has won awards for its commitment to sustainability and social responsibility. OMSI is across the river from downtown, within walking/public transport/shuttle distance.
 - ii. Edgefield Inn: a historic Georgian-revival style manor and village with working farm, brewery, distillery, and winery. This option would require private bus transport to the site.
- d. SCAR Delegates: A salmon bake organized through the PSU Native American Student and Community Center is possible, depending on salmon runs that year. An alternative is an event at the Kennedy School, a 1915 elementary school in NE Portland, turned brewpub and hotel.
- e. Local tour possibilities
 - i. Local tours may be led by volunteers or under contract with local businesses.
 - ii. Oregon Historical Society (walking distance from main venue): *Oregon My Oregon* guided tour (walking distance from venue)
 - iii. Portland Art Museum: notable Native and Pacific NW collections (walking)
 - iv. Oregon Nikkei Legacy Center (walking)

- v. International Rose Test Garden & Japanese Garden (light rail)
- vi. Portland Classical Chinese Garden: an authentically built Ming Dynasty style garden. (walking, bus)
- vii. World Forestry Center (light rail)
- viii. Portland walking tours (local company)
 - 1. Epicurean (\$60 in 2008; 3.5 hours walking through Portland's Pearl District, local produce, cheese makers, bakers, brewers, and more)
 - 2. Portland Underground (\$20 in 2008; crime, controversy, and tunnels)
- ix. Portland Beavers minor league baseball (\$10 + food; walking or light rail)
- x. Oaks Bottom Wildlife Refuge; 160 acre refuge in the city, 2 mile loop walk (private transportation)
- xi. Willamette Valley & Columbia River Gorge wine tours (private bus)
- xii. Brewery & Brewpub tours (city or regional, public transportation or private)
- xiii. Mt. St. Helens and Columbia River Gorge tours led by PSU Geology faculty (private bus)
- f. Post-conference tours
 - i. A local company, EcoTours of Oregon may be contracted for this purpose.
 - ii. Tour possibilities include: Native American Cultural tour; northern Oregon coast historical tour (Lewis & Clark, Maritime Museum, etc.).

7. Local amenities

- a. Because the meeting venues are downtown, **dining** options abound within walking and streetcar distance of the main venue, from simple, inexpensive food carts with loyal followings to memorable fine dining institutions with equally loyal patrons. Within blocks of the meeting venue, attendees will find options as diverse as Eastern European, Asian, Indian, Mexican, Middle Eastern, and French food carts; restaurants featuring cuisines from around the Pacific Rim and the world; and even traditional American fine dining. The Portland Streetcar brings even more options within easy reach. Portland cooks think local and seasonal, it is common to shop alongside chefs at the farmers' market.
- b. Downtown **farmers' markets**, with locally grown produce, artisan foods & wines, and even some dining options, will be active during the meeting: Wednesday lunchtime, Thursday evening, and Saturday morning through lunch. We will provide maps and lead groups to the markets if there is interest. (foot and streetcar access)
- c. Portland is the epicenter of the Pacific Northwest **craft brew** revival. There is a microbrewery/brewpub and local beer to suit every taste, as well as craft brewed sodas for those who prefer non-alcoholic options. (foot and public transportation access)
- d. **Powell's City of Books** and Powell's Technical Books is both bookstore and tourist destination. Accessible by foot and streetcar, Powell's the largest used & new bookstore on the planet. (foot and streetcar access)

- e. **Park Blocks & Public fountains.** Even downtown, Portland is rich with public parks and fountains where children and adults alike relax, socialize, and cool off on hot (for us) summer days.
 - f. **Tom McCall Waterfront Park**, the eastern boundary of downtown, is a few minutes walk from the main meeting venue. The park sprawls over 29 acres along the Willamette River and is home to historical sites such as the Battleship Oregon Memorial and Japanese American Historical Plaza, as well as the popular Salmon Street Springs, a fountain that recycles 4924 gallons of water through 185 jets.
 - g. Pioneer Courthouse Square, an open-air gathering place often called “Portland’s living room,” hosts local events throughout the summer.
 - h. Annual special events are held throughout the summer, one or more of which could attract participants, depending on the exact timing of the SCAR/COMNAP meetings and science conference. Major events that may coincide with the meetings include: the North American Organic Brewers Festival the last week of June; the Oregon Brewers’ Fest the last week of July; the Portland Waterfront Blues Fest the first weekend of July; Sand In The City sandcastle competition in Pioneer Courthouse Square mid-July.
 - i. **Benson Bubblers!** In 1912, Simon Benson, lumberman and civic leader, commissioned 20 drinking fountains with a \$10,000 gift. He wanted to offer loggers something other than beer and liquor to quench their thirst. The city now maintains 52 Benson Bubblers (four-bowl, continuously flowing, bronze drinking fountains). In 2005, the bubblers were retrofitted to be water efficient, and they now use less than 0.01% of the city’s water. It may seem odd, but the bubblers are a symbol of civic pride.
8. Prior experience
- a. Drs. Hulbe and Fountain have a range of event organizing and hosting experience, including thematic meetings of various sizes, the International Glaciological Society Symposium on Ice and Water Interaction in 2004, and Department of Geology fundraising events.
 - b. University resources are available for event organizing.
9. Aesthetics
- a. Downtown Portland is a destination for shopping, dining, cultural, and athletic events, as well as a place that people call home. As a result, downtown is active from morning to night. Both city and private (Portland Business Alliance) cleanup crews keep downtown exceptionally clean.
 - b. Last year, crime rates in Portland hit a 40-year low. In the downtown precinct, Portland Police are supplemented by security officers paid for by the Portland Business Alliance. *(A personal note from Christina Hulbe: I have lived in many places over my adult years, Portland is the only place I’ve lived where I felt really safe being out by myself at night.)*
 - c. Careful attention to urban planning means that Portland is efficient, accessible, and beautiful. While the city lies near the confluence of the Willamette and Columbia Rivers, it is easy to find stunning views of our local volcanoes, Mt. Hood and Mt. St. Helens. We value and use our abundant urban greenspace (37,000 acres, all tolled).

- d. Portland emerges routinely in “top” lists of **cleanest** American cities (clean air, clean water, clean streets). In 2008 we ranked #1 in a Reader’s Digest evaluation and #5 in a Forbes evaluation. Sustainability-minded organizations routinely rate Portland #1 when it comes to transit options, energy and water efficiency, air quality, land use, green building, and political leadership.
- e. Portland enjoys a mild, dry summer climate. On an average July day, our high temperature is 26.7 C (80 F) and the low is 14.4 C (28 F). The average total July rainfall is 16 mm.
- f. In 1993, Portland was the first US city to adopt its own plan to reduce CO2 emissions. In 2001, Multnomah County joined the effort to create the Local Action Plan on Global Warming with a goal of reducing CO2 emissions to 10 percent below 1990 levels by 2010. More work must be done but local greenhouse gas emissions are now less than 1 percent above 1990 levels.
- g. Additional related items are presented in the cover letter and in section 7.

10. Added value

- a. Please see the attached letter of support from our Vice Provost, Bill Feyerherm.
- b. Portland State has made a comprehensive institutional commitment to sustainability from the local to the global scale, including climate and environment research. Portland’s political leaders share these interests. The Portland State administration sees hosting the 2012 SCAR/COMNAP meetings as an opportunity to strengthen and showcase our commitment to supporting scientific research in a range of disciplines related to these themes.
- c. Community
 - i. We anticipate recruiting local student volunteers to assist during the meeting, at a substantially reduced registration fee. Our experience with the IGS Symposium in 2004 is that this opens the event to students who would otherwise be unable to attend.
 - ii. We will investigate organizing a program for local Community College and high school teachers in conjunction with the PSU School of Extended Studies.
 - iii. We have identified “green” vendors for conference giveaways (bags, notebooks, pens, etc.).

11. reference websites

- a. Hilton Portland www1.hilton.com/en_US/hi/hotel/PDXPHHH-Hilton-Portland-Executive-Tower-Oregon/index.do
- b. Travel Portland www.travelportland.com
- c. Portland International Airport www.flypdx.com
- d. Portland State University www.pdx.edu

Office of Graduate Studies and Research
Graduate Studies | Research and Sponsored Projects

Post Office Box 751	503-725-8410 Graduate Studies
Portland, Oregon 97207-0751	503-725-3423 Research and Sponsored Projects
Unitus Building, 6th Floor	503-725-3416 fax
2121 SW Fourth Avenue	www.gsr.pdx.edu

October 31, 2008

Dr. Christina Hulbe
Department of Geology
Portland State University

Re: SCAR 2012 meetings

Dear Christina

As we discussed, I have explored some of the elements related to a proposal to bring the 2012 SCAR meetings to Portland. PSU would be extremely pleased to serve as a host for these meetings.

In terms of financial support, as you know we can provide considerable support that would lower the costs by using on-campus logistic resources. In addition, I am willing to commit that between on-campus and fund raising activities we will provide at least \$100,000 in resources to offset conference costs.

On the housing issue, PSU owns and operates a 235 room hotel facility as well as on campus student housing. In discussions with the management staff of the hotel facility, we could effectively use a rate of \$25 per night for double occupancy per room per night for a set of student delegates or other as another way of limiting the costs of attendance for those delegates who are students or need subsidy in order to attend. The staff of the hotel would be pleased to work with us in providing other logistics, meeting room and other supports for the meetings.

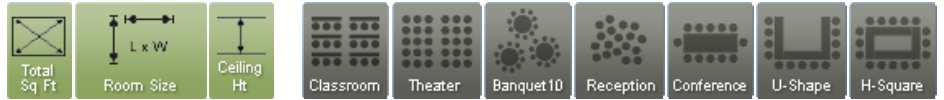
Sincerely yours



William Feyerherm, PhD
Vice Provost for Research

Hilton Portland & Executive Tower Meeting Room Capacity Chart

HILTON



THIRD FLOOR

	Total Sq Ft	Room Size	Ceiling Ht	Classroom	Theater	Banquet 10	Reception	Conference	U-Shape	H-Square
Boardroom East	209	11.67' x 25.00'	8	0	0	10	0	10	0	0
Boardroom West	242	11.67' x 22.67'	8	0	0	10	0	10	0	0
Cabinet Suite	260	14.25' x 22.75'	8	12	20	20	20	12	15	0
Council Suite	735	14.17' x 49.00'	8	48	70	50	70	36	34	37
Directors Suite	540	14.25' x 36.33'	8	36	48	40	50	24	22	25
Executive Suite	345	14.42' x 22.75'	8	18	30	30	30	18	18	21
Forum Suite	720	14.33' x 48.50'	8	48	70	50	70	36	34	37
Senate Suite	345	14.42' x 23.00'	8	18	30	30	30	18	18	21
Studio Suite	540	14.00' x 35.75'	8	36	48	40	50	24	22	25

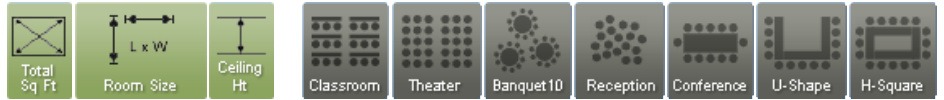
PLAZA LEVEL

	Total Sq Ft	Room Size	Ceiling Ht	Classroom	Theater	Banquet 10	Reception	Conference	U-Shape	H-Square
Broadway I	676	24.08' x 28.17'	10	35	65	50	65	24	24	30
Broadway I, II, III and IV	2,706	28.17' x 97.92'	10	130	260	220	260	60	60	90
Broadway II	676	24.67' x 28.17'	10	35	65	50	65	24	24	30
Broadway III	676	24.67' x 28.17'	10	35	65	50	65	24	24	30
Broadway IV	676	23.50' x 28.17'	10	35	65	50	65	24	24	30
Pavilion East	3,365	47.92' x 88.50'	16	110	250	230	300	75	60	80
Pavilion East and West	6,525	88.50' x 88.50'	16	280	600	480	600	0	100	120
Pavilion West	3,106	40.25' x 88.50'	16	100	250	210	250	75	60	80
Plaza Foyer	4,000	73.83' x 154.67'	15	0	0	0	320	0	0	0
Plaza Suite	671	15.50' x 32.50'	8	0	0	0	0	18	0	0

BALLROOM LEVEL

	Total Sq Ft	Room Size	Ceiling Ht	Classroom	Theater	Banquet 10	Reception	Conference	U-Shape	H-Square
Galleria	3,724	37.67' x 95.17'	8	140	300	300	320	0	0	0
Galleria-Galleria I	1,254	33.33' x 37.67'	8	35	75	60	90	22	0	0
Galleria-Galleria II	1,368	35.00' x 37.67'	8	60	120	100	110	34	0	0
Galleria-Galleria III	1,102	26.17' x 37.67'	8	35	75	60	90	22	0	0
Galleria-Galleria North	1,824	37.67' x 44.67'	8	70	175	150	160	44	39	48
Galleria-Galleria South	1,824	37.67' x 47.83'	8	70	175	150	160	44	39	48
Grand Ballroom	12,657	87.00' x 147.58'	18	650	1,500	1,100	1,500	0	0	0
Grand Ballroom Foyer	3,198	25.67' x 122.00'	9	0	0	0	300	0	0	0
Grand Ballroom-Ballroom I	6,786	87.00' x 78.00'	18	320	760	550	780	0	0	0
Grand Ballroom-Ballroom I and II	10,875	87.00' x 125.00'	18	575	950	870	1,250	0	0	0
Grand Ballroom-Ballroom II	4,089	87.00' x 47.00'	18	200	350	320	470	0	0	0
Grand Ballroom-Parlor A	594	22.17' x 26.58'	9	30	50	40	50	20	20	26
Grand Ballroom-Parlor A, B and C	1,782	22.17' x 80.25'	9	112	180	140	135	0	0	0
Grand Ballroom-Parlor B	594	22.17' x 26.42'	9	30	50	40	50	20	20	26
Grand Ballroom-Parlor C	594	22.17' x 26.58'	9	30	50	40	50	20	20	26

Hilton Portland & Executive Tower Meeting Room Capacity Chart



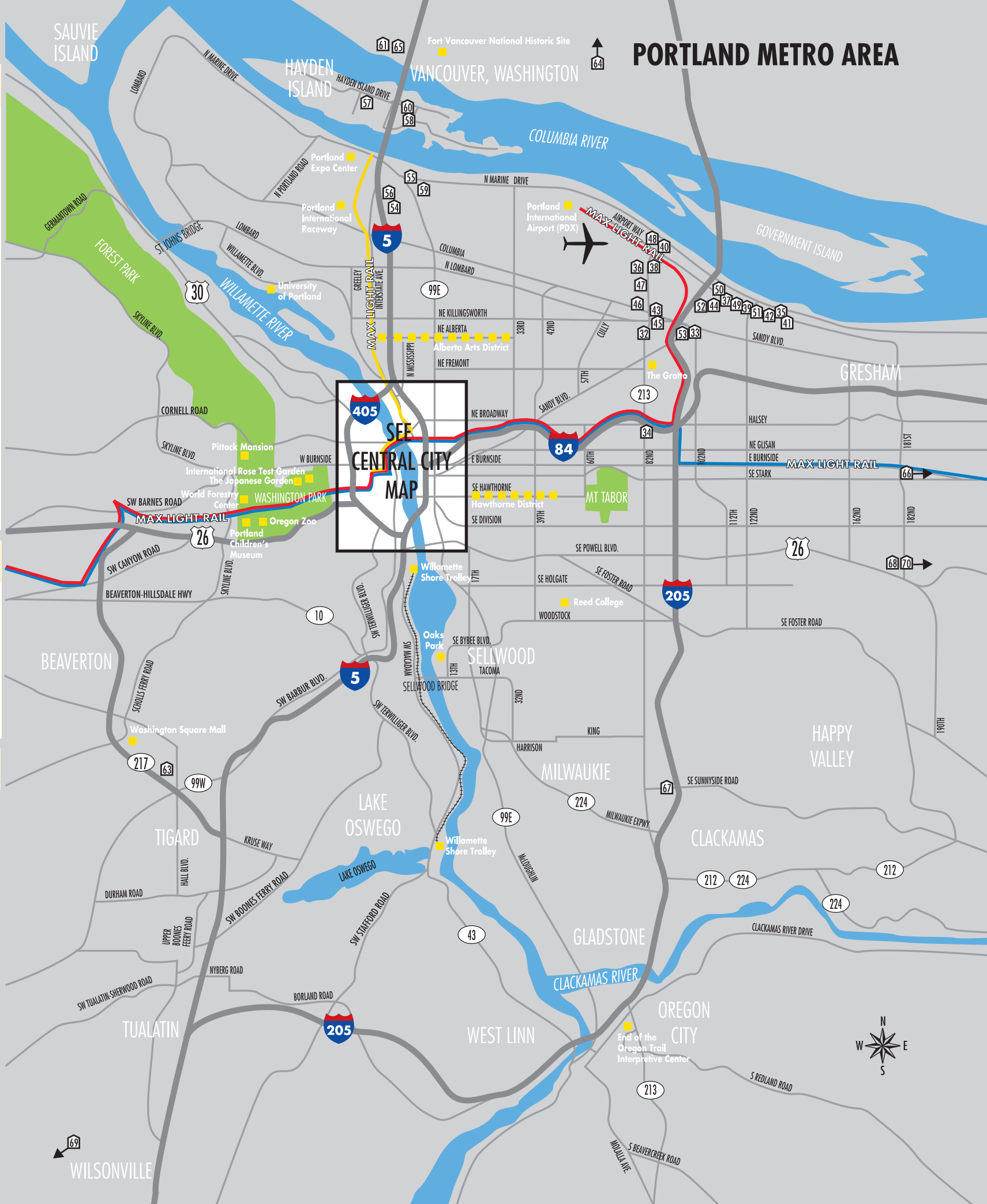
EXECUTIVE TOWER

	Total Sq Ft	Room Size		Ceiling Ht	Classroom	Theater	Banquet 10	Reception	Conference	U-Shape	H-Square
Executive Boardroom	381	21.08'	x 20.08'	9	0	0	0	0	12	0	0
Executive Tower 2037	325	25.00'	x 13.00'	9	0	0	0	0	0	0	0
Executive Tower 2039	425	25.00'	x 17.08'	9	0	0	0	0	0	0	0
Executive Tower 2040	420	21.00'	x 20.42'	9	0	0	0	0	0	0	0
Mt.St Helens Suite 2120	494	38.58'	x 13.67'	8	0	0	0	0	0	0	0
Salon Ballroom	2,193	74.50'	x 31.58'	11	120	230	180	250	0	0	70
Salon Ballroom Pre Function	881	30.67'	x 29.25'	13	0	0	0	60	0	0	0
Salon Ballroom-Salon Ballroom I	731	24.67'	x 31.58'	11	40	70	50	70	25	25	16
Salon Ballroom-Salon Ballroom I and II	1,462	49.92'	x 31.58'	11	80	140	130	130	50	0	64
Salon Ballroom-Salon Ballroom II	731	25.25'	x 31.58'	11	40	70	50	70	25	25	40
Salon Ballroom-Salon Ballroom II and III	1,462	49.83'	x 31.58'	11	80	140	130	130	50	0	64
Salon Ballroom-Salon Ballroom III	731	24.58'	x 31.58'	11	40	70	50	70	25	25	40

AIRPORT	
MAP SPOT	HOTEL NAME
32	Best Value Inn & Suites/Forniter
33	Best Western Pony Soldier Inn - Airport
34	Comfort Inn
35	Comfort Suites - Airport
36	Country Inn & Suites Portland Airport
37	Courtyard by Marriott - Portland Airport
38	Embassy Suites Hotel Portland Airport
39	Fairfield Inn by Marriott Portland Airport
40	Hampton Inn - Portland Airport
41	Hilton Garden Inn - Portland Airport
42	Holiday Inn Express Hotel & Suites - Portland Airport
43	Holiday Inn Portland Airport
44	La Quinta Inn & Suites - Portland Airport
45	Quality Inn - Portland Airport
46	Radisson Hotel Portland Airport
47	Ramada Inn & Suites Portland Airport
48	Sheraton Portland Airport Hotel
49	Shilo Inn Suites Hotel - Portland Airport
50	Clarion Inn at the Portland Airport
51	SpringHill Suites by Marriott Portland Airport
52	Super 8 Motel - Airport
53	Travelodge Portland Airport

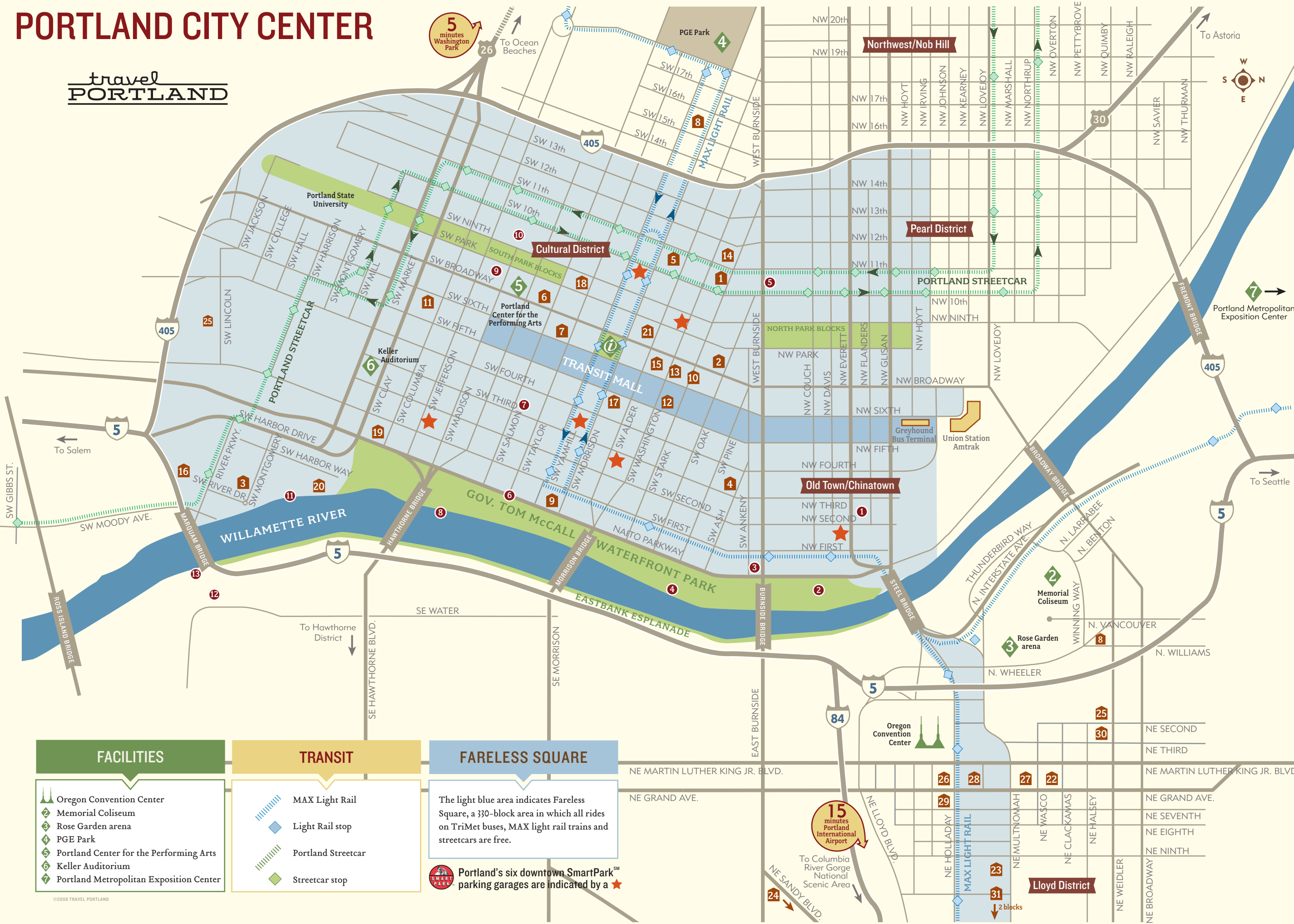
JANTZEN BEACH	
MAP SPOT	HOTEL NAME
54	Best Western Inn at the Meadows
55	Courtyard by Marriott Portland North Harbour
56	Days Inn Portland North
57	Holiday Inn Express Hotel & Suites - Jantzen Beach
58	Oxford Suites Portland
59	The Portlander Inn & Marketplace
60	Red Lion Hotel on the River
61	Red Lion Hotel Vancouver at the Quay

METRO PORTLAND REGION & BEYOND	
MAP SPOT	HOTEL NAME
63	Embassy Suites Portland Washington Square
64	The Heathman Lodge
65	Hilton Vancouver Washington & Vancouver Convention Center
66	Holiday Inn Portland/Gresham
67	Monarch Hotel & Conference Center
68	The Resort at The Mountain
69	Salishan Spa & Golf Resort
70	Timberline Lodge



PORTLAND CITY CENTER

travel
PORTLAND



HOTELS
DOWNTOWN AND LLOYD CENTER

- 1 Ace Hotel Portland
- 2 The Benson Hotel
- 3 Downtown Value Inn
- 4 Embassy Suites Portland Downtown
- 5 The Governor Hotel
- 6 The Heathman Hotel
- 7 Hilton Portland & Executive Tower
- 8 Hotel deLuxe
- 9 Hotel Fifty
- 10 Hotel Lucia
- 11 Hotel Modera
- 12 Hotel Monaco Portland
- 13 Hotel Vintage Plaza
- 14 The Mark Spencer Hotel
- 15 Marriott City Center
- 16 Marriott Residence Inn
Portland Downtown at RiverPlace
- 17 The Nines
- 18 The Paramount Hotel
- 19 Portland Marriott Downtown Waterfront
- 20 RiverPlace Hotel
- 21 The Westin Portland
- 22 Courtyard by Marriott Portland
Downtown/Lloyd Center
- 23 Doubletree Hotel & Executive Meeting
Center Portland – Lloyd Center
- 24 Executive Lodge
- 25 Holiday Inn Portland
Downtown/Convention Center
- 26 Inn at the Convention Center
- 27 La Quinta Inn
– Portland Convention Center
- 28 Red Lion Hotel Portland
– Convention Center
- 29 Shilo Inn – Portland Convention Center
- 30 Shilo Inn – Portland/Rose Garden
- 31 Marriott Residence Inn
– Portland Downtown/Lloyd Center

ATTRACTIONS

- Travel Portland Information Center, located in Pioneer Courthouse Square
- 1 Portland Classical Chinese Garden
 - 2 Japanese American Historical Plaza
 - 3 Portland Saturday Market
 - 4 Oregon Maritime Center & Museum
 - 5 Powell's City of Books
 - 6 Mill Ends Park
 - 7 Oregon Sports Hall of Fame
 - 8 Portland Spirit
 - 9 Oregon Historical Society
 - 10 Portland Art Museum
 - 11 RiverPlace Marina
 - 12 Oregon Museum of Science & Industry (OMSI)
 - 13 Wilamette Jetboat Excursions

FACILITIES

- Oregon Convention Center
- Memorial Coliseum
- Rose Garden arena
- PGE Park
- Portland Center for the Performing Arts
- Keller Auditorium
- Portland Metropolitan Exposition Center

TRANSIT

- MAX Light Rail
- Light Rail stop
- Portland Streetcar
- Streetcar stop

FARELESS SQUARE

The light blue area indicates Fareless Square, a 330-block area in which all rides on TriMet buses, MAX light rail trains and streetcars are free.

Portland's six downtown SmartParkSM parking garages are indicated by a ★

Portland State University was established as the **Vanport Extension Center** in 1946 to satisfy the demand for higher education in Portland for returning World War II veterans. It became known as “the college that wouldn't die” when it refused to close after the Vanport Flood destroyed its infrastructure in 1948. Instead, the Center went on the road, holding classes wherever space could be found. In 1952 the Center moved downtown to the vacated buildings of Lincoln High School on SW Broadway.

The Center became a four-year degree-granting institution in 1955 and changed its name to Portland State College. Graduate programs were added in 1961 and doctoral programs were added in 1968. University status was granted by the Oregon State System of Higher Education in 1969.

In 1994 PSU replaced the traditional undergraduate distribution system with an interdisciplinary general education program known as University Studies. This innovative program has garnered national attention.

Portland State is currently the largest and fastest growing school in the Oregon University System. The university is ranked among the “Best in the West” and as a “College With a Conscience” by the Princeton Review. Portland State continues to add doctoral programs as it has grown from an original mission as a liberal arts undergraduate college into a university with an important research dimension. Recently added doctorates are in Mathematics, Biology, Chemistry, Computer Science, Applied Psychology, Engineering & Technology Management, Mechanical Engineering and Sociology.

Portland State awarded a total of 4,738 degrees for the 2007-08 academic year, including 3,200 bachelor's degrees, 1,485 master's degrees and 53 doctoral degrees.

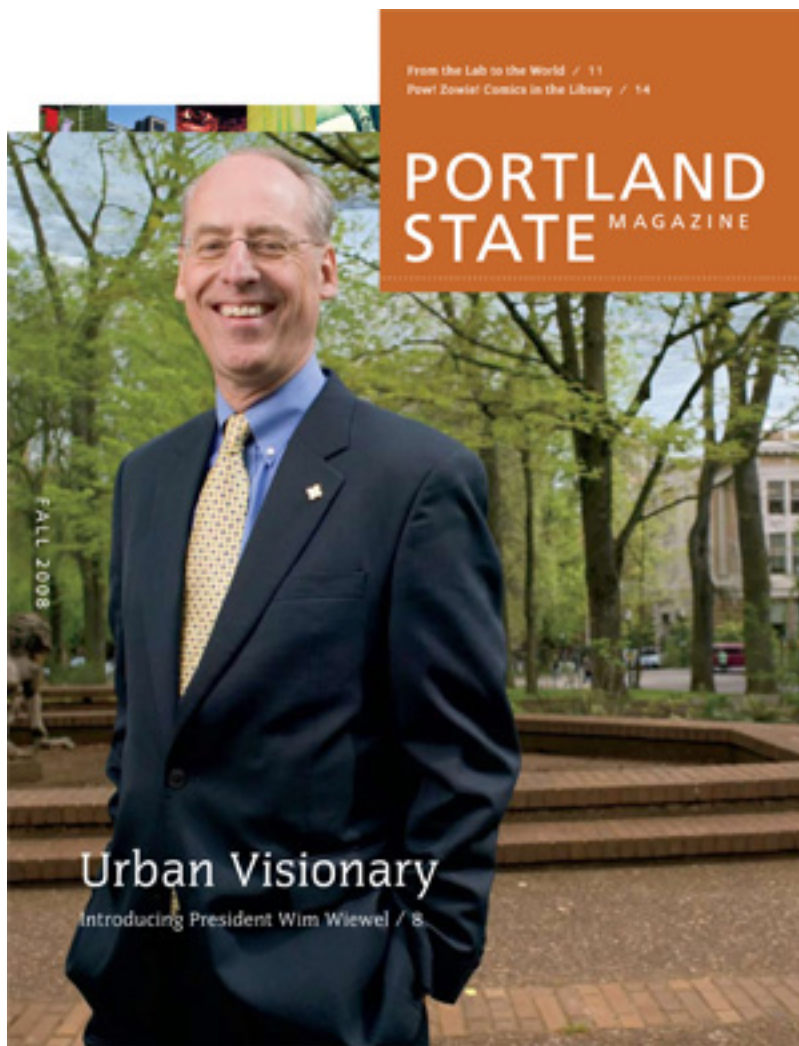
Portland State differs from the other universities in Oregon in part because as an urban institution it attracts a student body older than other universities. In the 2006-2007 academic year, the average student age was 25 years. Increasing traditional enrollment is bringing the average student age down. Ambitious mixed-use building projects (commercial, educational, residential) in the city are purposed to attract younger students. These establishments preserve downtown shops and businesses while transforming Portland State University from a “commuter campus” to a mix between a commuter and a traditional campus.

Civic Engagement is a cornerstone of the PSU mission. The university supports faculty who develop community partnerships in their research and in the classroom. The University Studies senior-year “Capstone” experience is designed to build cooperative learning communities by taking students out of the classroom and into the field. The motto “Let Knowledge Serve the City” greets everybody who arrives on campus via Broadway.

In 2006, Portland State was declared to be the nation's first Salmon Safe University by the nonprofit organization Salmon Safe. The award was given to recognize campus-wide efforts toward environmental sustainability by treating storm water runoff before it reaches the local watershed.

In 2008, PSU received The Jimmy and Rosalynn Carter Partnership Award for Campus-Community Collaboration for its Watershed Stewardship Program. The program has led over 27,000 community volunteers donating a quarter million hours to install 80,000 plants and restore 50 acres of watershed along two miles of river. Individual projects have been led and supported by 700 students working as part of class projects, resulting in two master's theses and three research articles.





Urban Visionary

ON HIS FIRST DAY at work, new Portland State University President Wim Wiewel rode his bike to campus, accompanied by Mayor-elect Sam Adams. Looking preppy in pleated green slacks, green PSU polo shirt, and cool lime-green cycling jacket, Wiewel was greeted by a crowd of PSU staff and students.

Portland State President Wim Wiewel "What better way to emphasize PSU's commitment to sustainability than bicycling," said a cheerful Wiewel. "And what better way to symbolize our partnership with the city than to do it with our new mayor-elect."

The event encapsulated Wiewel's approach: high energy, media-savvy, in touch with his environment, and oriented toward partnerships.

[...]

"Portland is very similar to Amsterdam, to me," says Wiewel. "There's just something

about the lifestyle, the atmosphere—it's tolerant, a little funky, progressive, laid back, and culturally and artistically creative with a lot to do. Then there are things like the rain and the bikes."

WIEWEL'S OVERALL vision for the University will place it squarely at the juncture of academia and the real world. "Portland State has a tremendous opportunity to play a major role in shaping the future of Portland—applying its knowledge to real, current problems," Wiewel says. "That's why Portland and Portland State are such a perfect match for me."

Wiewel says he learned a number of important lessons during his tenure at UIC and at University of Baltimore. "It's been said that vision without action is a daydream; action without vision is a nightmare," he says. "I'm a big-picture guy in that I'm able to come up with the vision, but it's not something I do by myself. I do it by talking with and listening to people."

To that end, Wiewel and Mayor-elect Sam Adams plan to hold a conference in the spring that will include area community leaders. The focus is Portland State's role as a civic partner, but the meeting will also serve as Wiewel's formal inauguration.

Ultimately, university presidents are remembered for the changes that occurred during their term at the helm. What does Wiewel see for PSU?

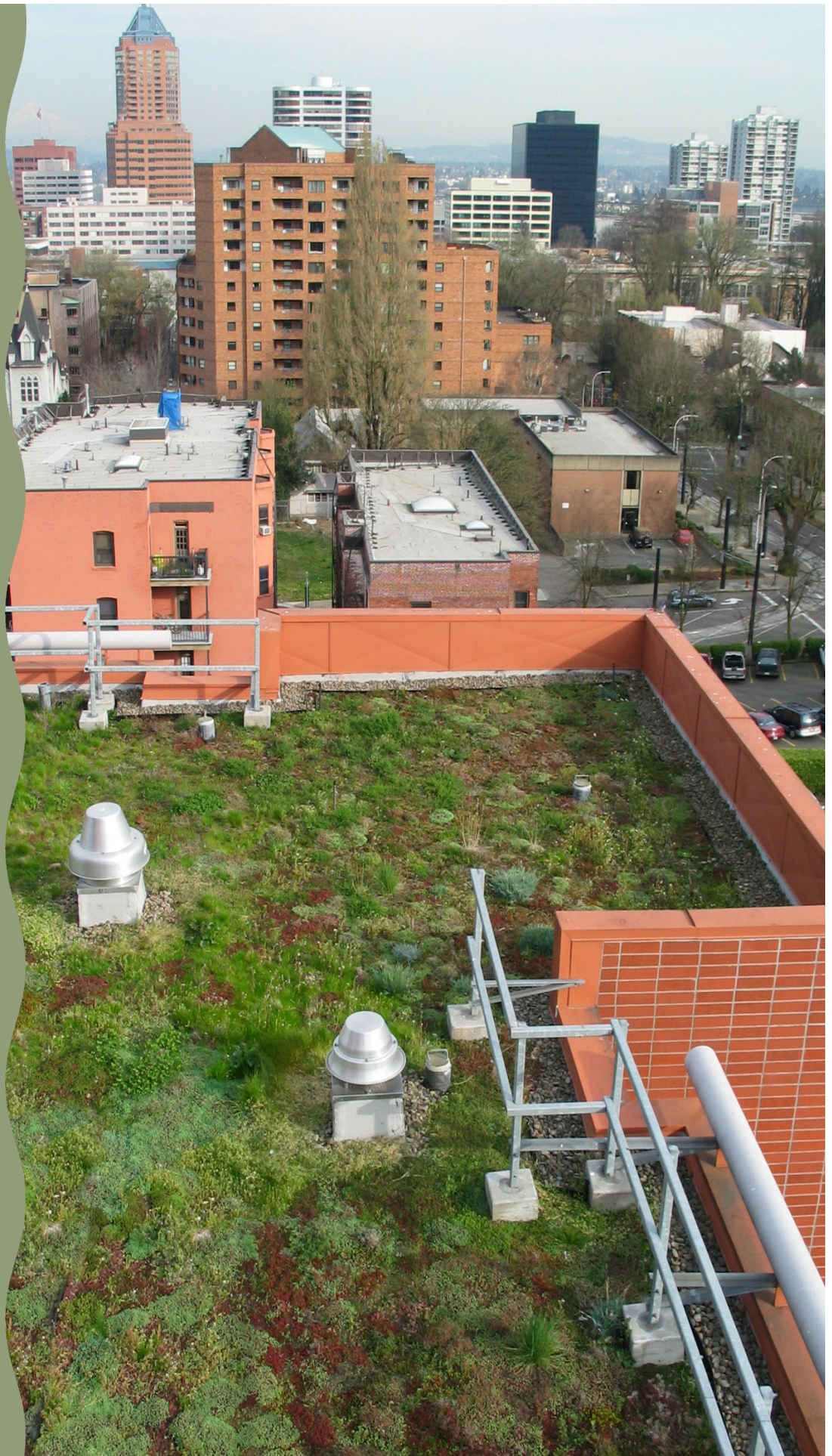
"I want us to be known as a national and international leader in sustainability," says Wiewel, "and an exemplar of what it means to be a civic partner in a major urban area."

Jeff Kuechle, a Portland freelance writer, is a frequent contributor to Portland State Magazine. September 25, 2008

Portland Ecoroof Tours



ENVIRONMENTAL SERVICES
CITY OF PORTLAND
working for clean rivers



A River Renaissance

The Willamette River is at the heart of Portland's economy, history, landscape and culture. Growth and prosperity have placed a heavy burden on Willamette Valley rivers and streams. These waterways face many critical challenges: pollution, sewer overflows, dying fish runs, erosion, and the loss of trees and wildlife habitat.

Greening Portland Rooftops

Ecoroofs are an important part of Portland's efforts to reduce the negative impact of stormwater runoff on rivers and streams. Environmental Services and the Office of Sustainable Development promote the use of ecoroofs, research ecoroof technology and give information and technical assistance to building owners who are considering installing an ecoroof.

Portland's Ecoroof Program

Research

Environmental Services monitors a downtown Portland ecoroof to gather data on how effective ecoroofs are in reducing stormwater runoff and improving water quality.

Education

Environmental Services staff provide technical assistance, tours, presentations and online resources for interested citizens and people installing ecoroofs.

Funding

City grants have funded ecoroofs on 14 sites ranging from high rise apartment complexes and office buildings to small park shelters and community based projects.

Policy

The City encourages ecoroof construction through building and zoning code. New development is required to treat all stormwater on site and an ecoroof is an approved treatment facility. Development in the central nine square miles of Portland is eligible for Floor Area Ratio bonuses for installing an ecoroof.

Future Financial Incentives

Environmental Services is developing a program to give stormwater fee discounts to properties for reducing impervious area.

Information included in this document was collected from project owners and their consultants. Environmental Services cannot guarantee its accuracy. Some information, i.e. maintenance, have not been included because of insufficient history.

Information source for Balfour-Guthrie (pg 5) and Stephen Epler Hall (pg 15): 2003 AIA Northwest & Pacific Region Conference. Architecture in an Environment of public Participation. Tour guide booklet.

A Brief History of Ecoroofs in Portland

1996

First ecoroof installed on a residential garage.

July 1999

The ecoroof is officially recognized as a stormwater management technique.

September 1999

Hamilton Apartments ecoroofs are completed with grant funding from Environmental Services. Monitoring on this roof begins in early 2001.

March 2001

Zoning code is amended to include ecoroofs as a floor area ratio bonus option.

Broadway Building - 625 SW Jackson Street

Public Access: None

Introduction: Broadway Housing's ecoroof is the largest in Portland. It is located on a newly constructed 'gateway' building to downtown Portland, and is visible from the surrounding hills. The building provides students at Portland State University with retail on the ground floor, classrooms on the 2nd floor, and 8 floors of student housing. Portland State University students will monitor the ecoroof's performance.

Project Team

Owner: Portland State University / Urban Housing, LLC

Developer: Gerding Edlen

Architect: Otak Architects, Inc.

Contractor: Hoffman Construction

Landscape Contractor: Tuefel

Type of Building: 10 story mixed-use building

Land Use: University District

Building Roof Area: 22,849 sq. ft., 2,123 sq. meters

Contacts: Michele Crim, PSU Sustainability Coordinator,
503-725-8945, crimm@pdx.edu

Patrick Wilde, Gerding Edlen, 503-802-6609

Construction

Ecoroof Area: 15,239 sq. ft., 1,416 sq. meters

Type of Construction: New

Ecoroof Construction Date: June 2004

Solar Exposure: Predominately South

Slope: 2% min.

Funding: Public/Private, Bond

Ecoroof Cost: Approx. \$21 / sq. ft.

Overflow: City storm system

Roof Structure: Post tension concrete

Waterproof Membrane: Garlands stress-Ply polymer

Ecoroof Assembly: Green roof surfacing by Garland Company

Soil Mix: Blended soil from Swanson Bark Products

Soil Depth: 6", 15 cm

Saturated Soil Weight: 22.5 psf max, 110 kg/sq. meter

Soil Stabilization: unknown

Plant Material: Eleven species of sedum, sempervivum, ice plant and various wildflowers.

Irrigation: Installed automatic irrigation system to be used for the first two years



Rendering by Otak Architects, Inc.

Native American Student and Community Center - PSU - 710 SW Jackson Street

Public Access: During business hours

Introduction: This roof garden is a public green space that also mitigates water runoff. Other sustainable features include the use of daylighting, and an active/passive ventilation system, in lieu of air conditioning, that tells building occupants when to open the windows and turn off the fan system. The nature of the building and its adoption by the Native American community ensures that the roof garden area will be cared for as a relatively high-maintenance garden featuring plants important to Native American culture, rather than as a prototypical low-maintenance ecoroof.

Project Team

Owner: Portland State University

Architect: StastnyBrun Architects

Landscape Architect: McCormack Landscape Designs

Structural Engineer: KPFF

General Contractor: Andersen Construction Co. Inc.

Type of Building: One story steel, masonry and concrete

Land Use: University District

Building Roof Area: 11,000 sq. ft., 1,020 sq. meters

Contact: Tabitha Whitefoot, Director, Native American Student and Community Center, 503-725-9695

Construction

Roof Garden Area: 4,000 sq. ft., 370 sq. meters

Type of Construction: New

Roof Garden Construction Date: August 2003

Solar Exposure: South

Slope: unknown

Funding: State of Oregon, gifts, grants: Federal EDA Office of Sustainable Development and PSU Facilities, Sustainability section

Roof Garden Cost: Not calculated independently.

Overflow: Through cartridge filters before entering city system

Roof Structure: Upgraded to steel and concrete construction for assembly occupancy and to hold deep soil depths

Waterproof Membrane: APAO Modified Bituminous Sheet

Roof Garden Assembly: Ameridrain 560 drain mat. Washed drainage rock in primary runoff areas to prevent erosion. Drain rock separated from soil and top dressing with geotextile fabric.

Soil Mix: Soilless planting mix with nutrient charge

Soil Depth: 6" to 30", 15 to 76 cm

Saturated Soil Weight: 200 psf max, 977 kg/sq. meter

Soil Stabilization: Bark mulch top dressing

Plant Material: Native evergreen and deciduous shrubs, grasses, sedum, bulbs and perennials.

Irrigation: Installed automated system

