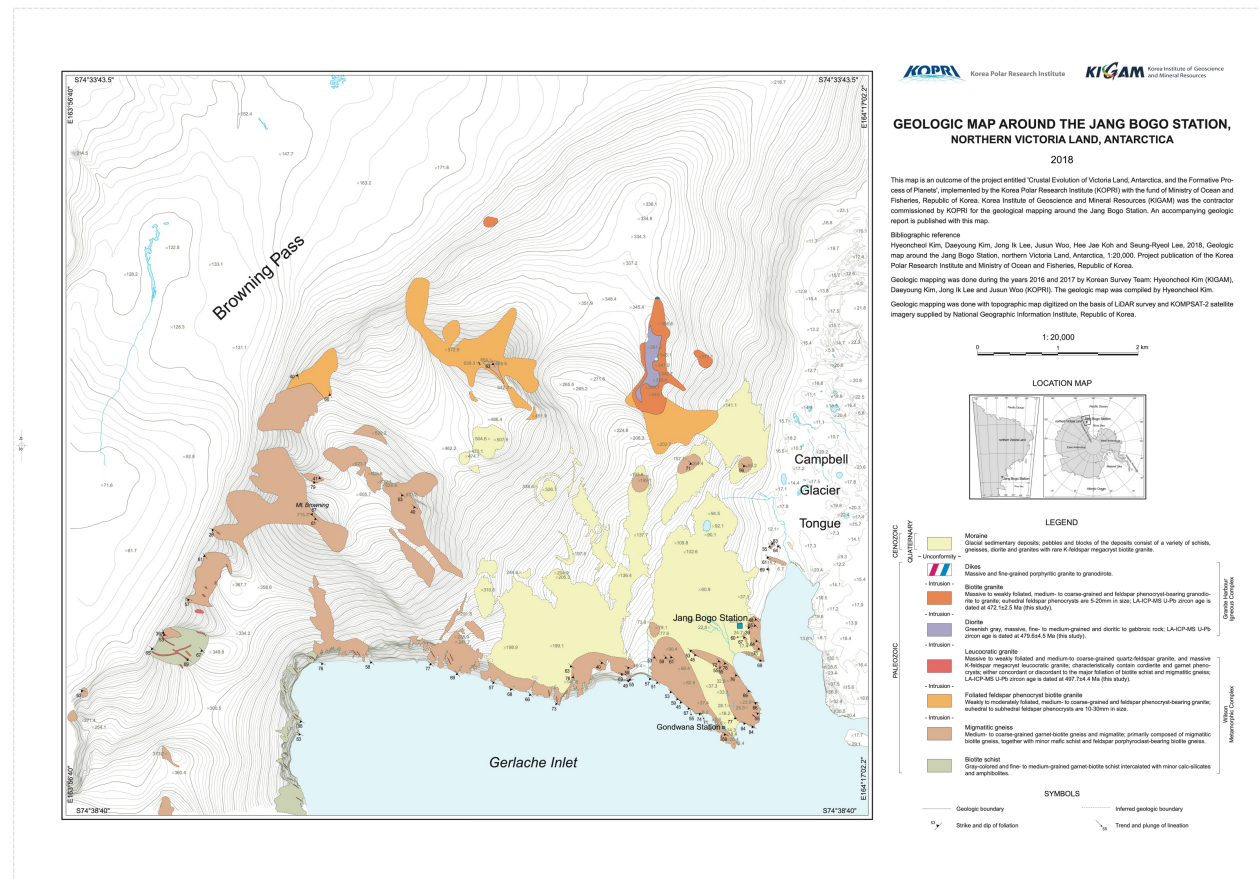


National Report by Korea, Republic of 2019/2020

Drs. Joohan Lee and Young-Keun Jin
Korea Polar Research Institute

Geologic map

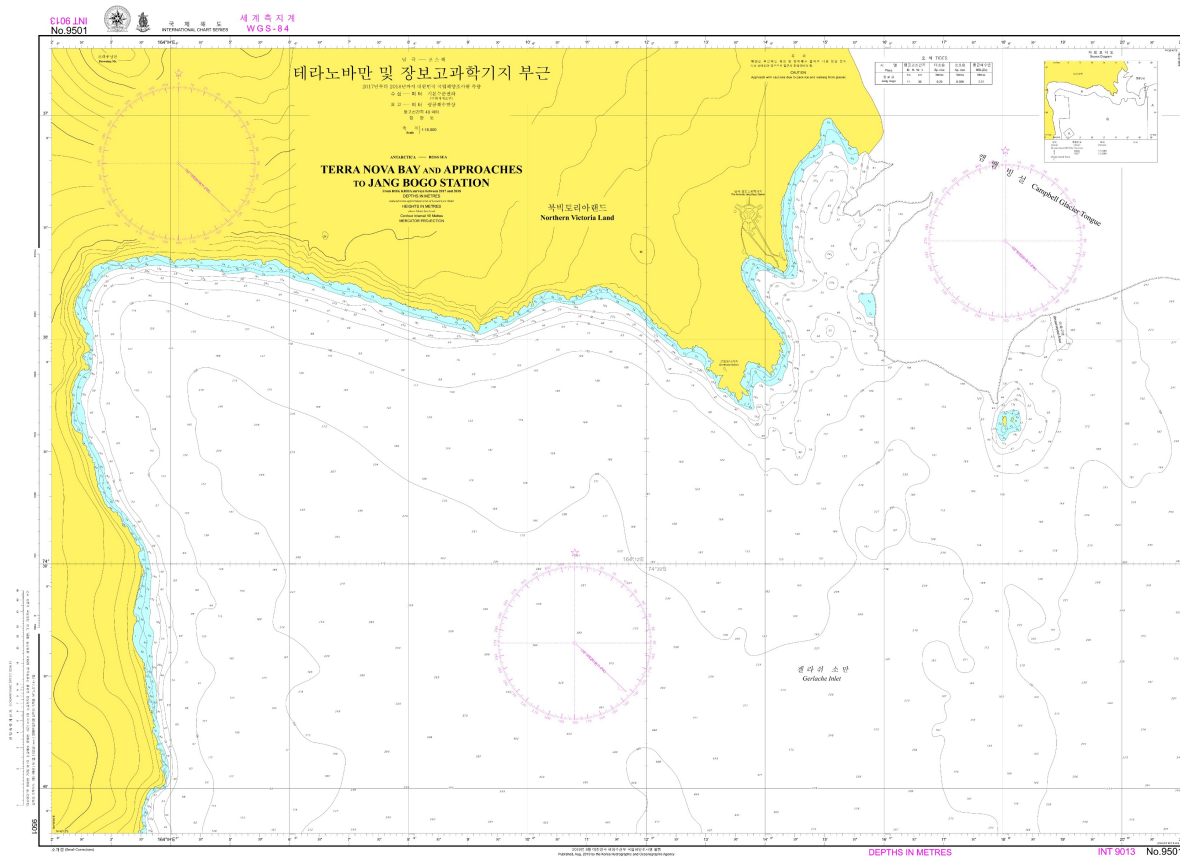
- Release of Geologic map around the Jang Bogo Station, Northern Victoria Land, Antarctica in 2019





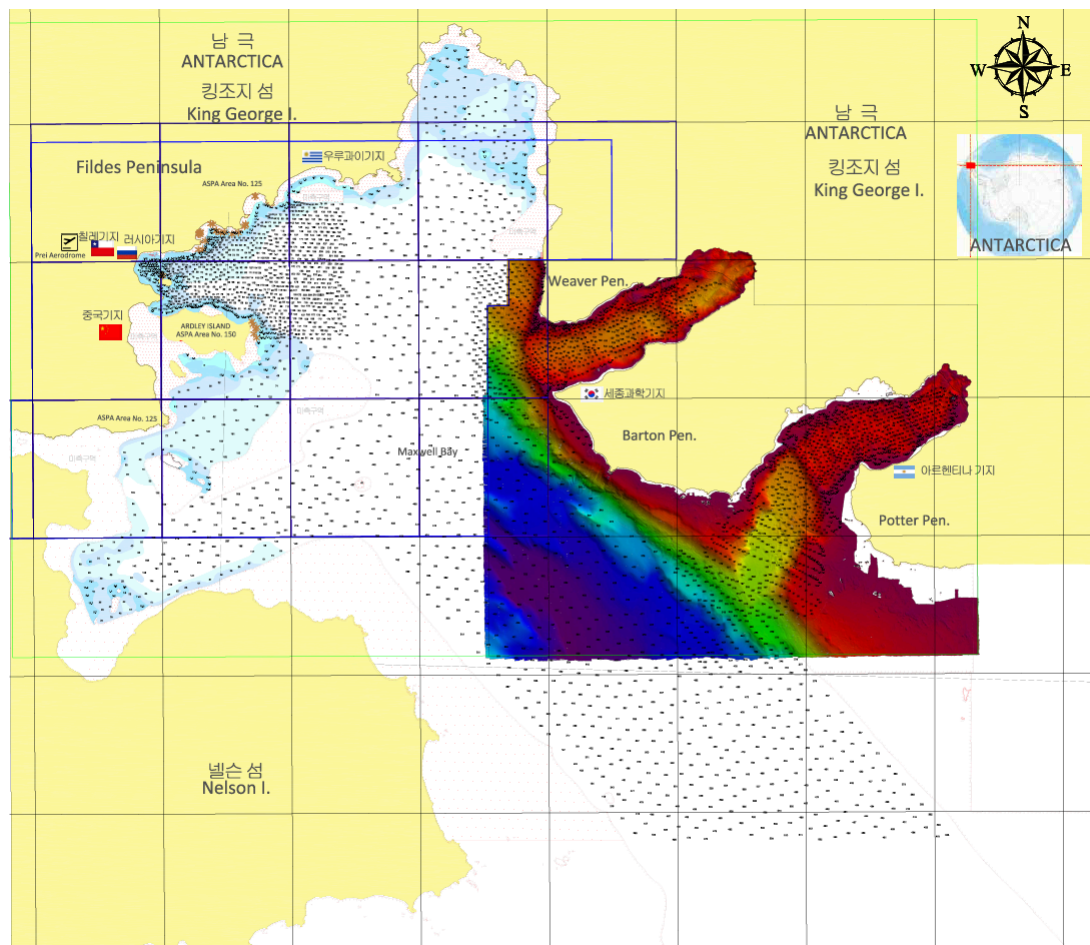
Bathymetric survey and charting progress

- Release of a National chart near the Jang Bogo Station in 2019



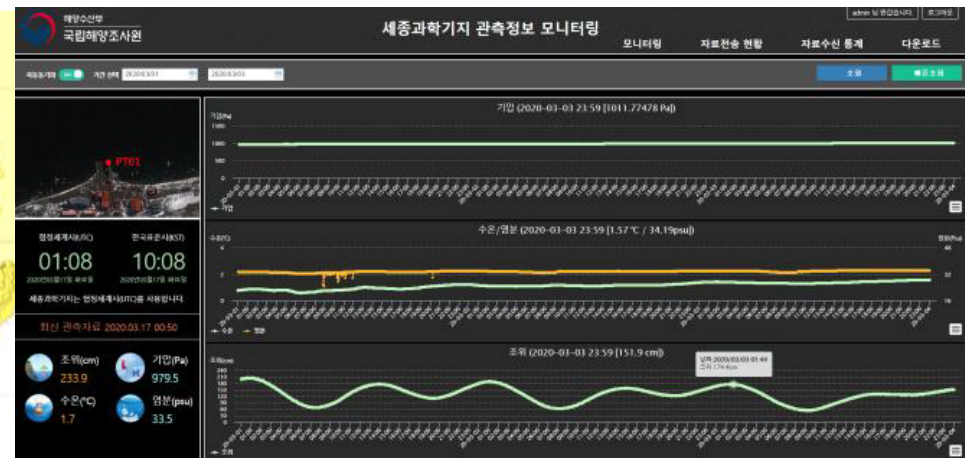
Bathymetric survey and charting progress

- Survey for charts near the King Sejong Station (2019-2021)



Bathymetric survey and charting progress

- Set up a real-time tide gauge station at King Sejong station on February 2019.



- *Data acquired from 2017 and 18 were uploaded on BAS's FTP site. (David Glacier, D2 subglacial lake, Campbell ice tongue, and Elephant moraine)*

