



# National Report: Australia

For SCAGI, July 2020

Ursula Harris



Australian Government

Department of Agriculture, Water and the Environment

Australian Antarctic Division



AUSTRALIAN  
ANTARCTIC  
PROGRAM



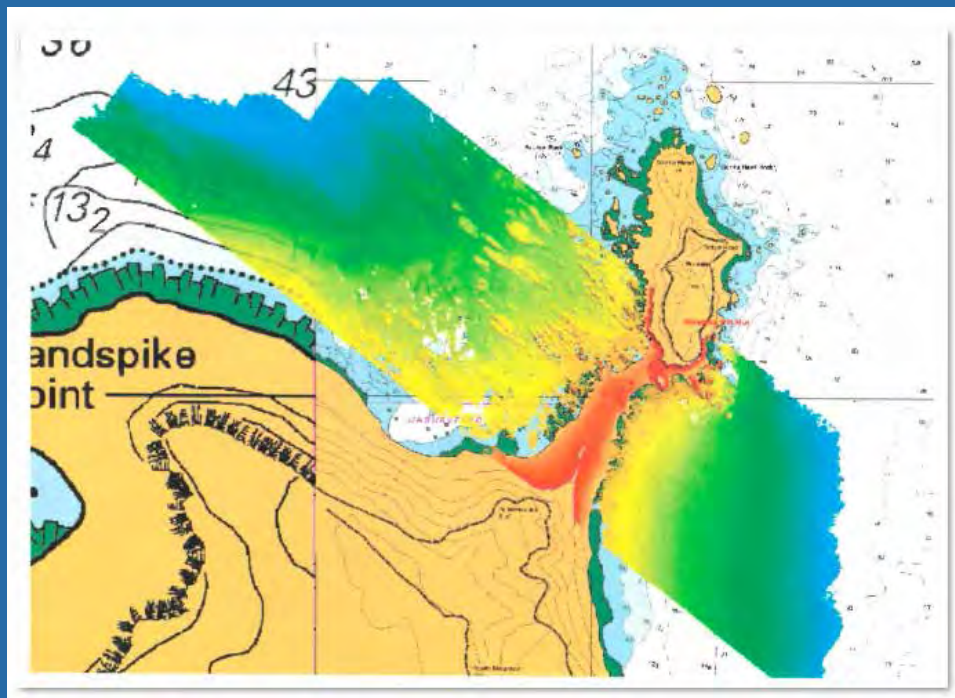
20 years strategic plan identified the need for an *Enhanced mapping and charting program*

A five year plan is in circulation, which will turn into workplans



## Recent Hydrographic Surveying

- Laser Airborne Depth Sounder at Macquarie Island (e.g. left map)
- Shallow water bathymetry at our stations



- Surveys are part of preparations for RSV *Nuyina* and her barges
- Preparations for handling data RSV *Nuyina*, including from two multibeam systems

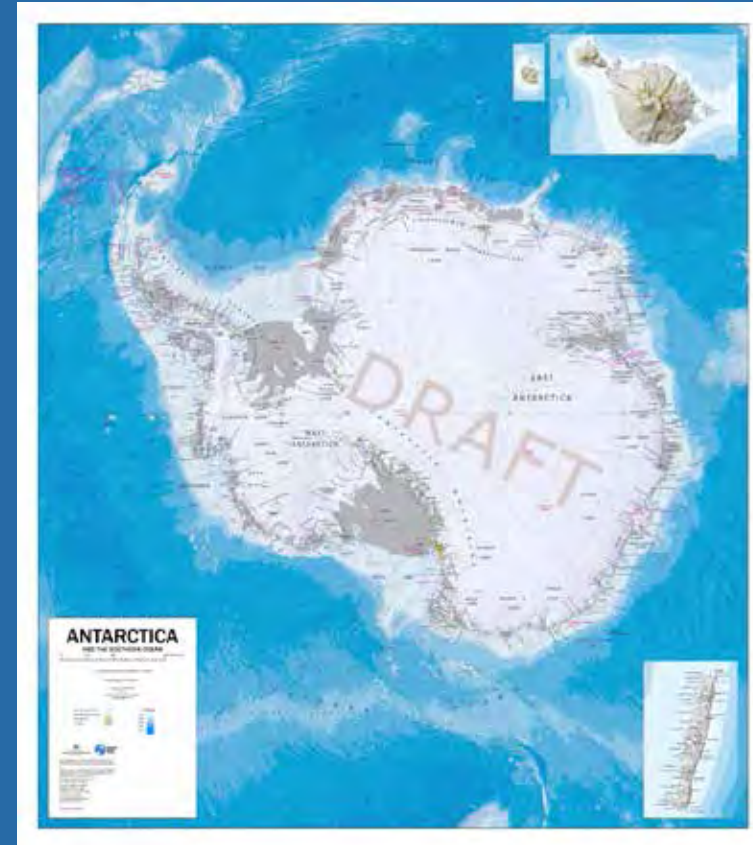


RSV *Aurora Australis*  
Retired

RSV *Nuyina*  
Coming 2021

## Mapping

- New Mapping Officer
- New editions of our 1:10 million and 1:20 million maps of Antarctica. Current in draft
- We've considered the principles outlined in our draft paper *"International Principles and Procedures for Antarctic Place Names"* for our maps



1:10 million map of Antarctica

# Place Names



- A contributor to the SCAGI Working Group on Place Names
- Our place names committee is supportive of the proposed new principles for place naming
- Six new Australian names
- Continue to work with the Italians who maintain SCAR gazetteer content, while we manage the site and bulk uploads.

[https://data.aad.gov.au/aadc/gaz/scar/batch\\_instructions.cfm](https://data.aad.gov.au/aadc/gaz/scar/batch_instructions.cfm)

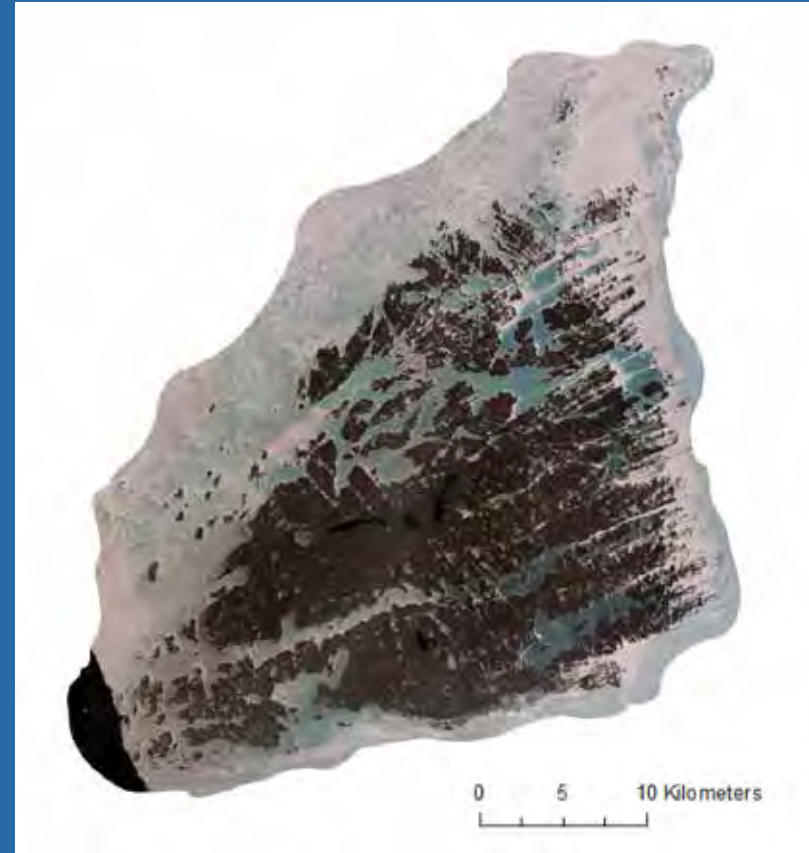
A screenshot of the SCAR Composite Gazetteer of Antarctica website. The page features the SCAR logo on the left and the Italian Antarctic Program logo on the right. The main heading is "COMPOSITE GAZETTEER OF ANTARCTICA" followed by "ENEA - P.N.R.A.". Below this, it states "Scientific Committee on Antarctic Research (SCAR)" and "Co-led by Programma Nazionale di Ricerche in Antartide (Italy)" and "in the framework of the SCAR Standing Committee on Antarctic Geographic Information (SCAGI)". A navigation bar includes "SCAR Gazetteer", "Search", "Information", "Administration", "Unauthenticated user", and "Logout". A sidebar on the left lists menu items: "General Information", "Status", "Glossary", "Naming Authority", "History", "Data and Validation", "Data Download", and "Data Upload". The main content area is titled "Instructions for batch edits" and contains two sections: "To prepare a file for batch updates of existing place names:" and "To prepare a file for batch additions of place names:". Each section includes a numbered list of steps for downloading data and performing batch edits or additions.

## Satellite Imagery

- We purchase imagery for projects. For example:
- Three ortho-ready swaths of WorldView-3 imagery  
↓
- Orthorectified, mosaicked and pan-sharpened using our DEM which was extended using REMA data  
↓
- Used for environmental reporting for the proposed Davis Aerodrome Project

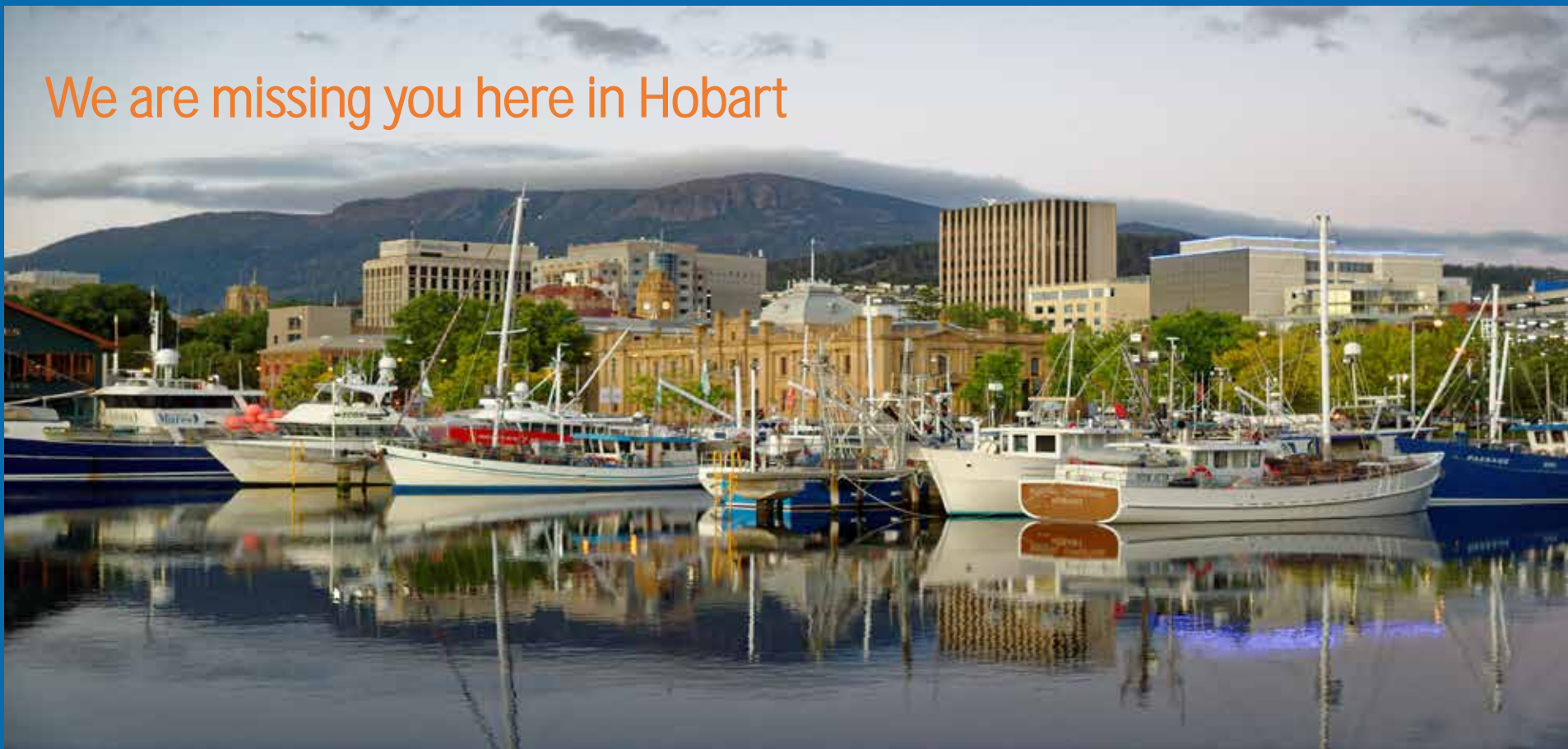


Vestfold Hills



© DigitalGlobe, Inc., All Rights Reserved

We are missing you here in Hobart



FOLLOW US @AusAntarctic





# SCAR Map Catalogue Report

July 2020

Ursula Harris



Australian Government

Department of Agriculture, Water and the Environment

Australian Antarctic Division



AUSTRALIAN  
ANTARCTIC  
PROGRAM





## Map 15293: Antarctic Peninsula and Weddell Sea

### Map details

<b>Map Number</b>	15293
<b>Title</b>	Antarctic Peninsula and Weddell Sea
<b>Edition</b>	3
<b>Previous edition</b>	[Previous edition : 1]
<b>Scale</b>	1 : 3 000 000
<b>Publication date</b>	2016
<b>Publisher</b>	British Antarctic Survey (United Kingdom)
<b>Spatial coverage</b>	( -82.0000° -60.0000° ) , ( 0.0000° -60.0000° ) , ( 0.0000° -85.0000° ) ( -82.0000° -85.0000° )
<b>Projection</b>	Polar Stereographic
<b>Physical size</b>	110 x 84 cm
<b>Notes</b>	This is side A of a double-sided map. A map of 'Graham Land and South Shetland Islands' (Map Number 15294) is on the reverse. More information can be found at <a href="https://www.bas.ac.uk/data/our-data/maps/topographic-maps/antarctic-peninsula-and-weddell-sea-graham-land-and-south-shetland-islands/">https://www.bas.ac.uk/data/our-data/maps/topographic-maps/antarctic-peninsula-and-weddell-sea-graham-land-and-south-shetland-islands/</a>
<b>Reference</b>	BAS (Misc) 13A
<b>Keywords</b>	Antarctic Peninsula , Ronne Ice Shelf , Larsen Ice Shelf , Weddell Sea , Topographic

### Preview



### Map extent



- Laura from BAS updated 15 UK maps

- The entry includes where to find out more information which includes a link to order a map



## Map 14495: Australia to Antarctica

### Map details

Map Number	14495
Title	Australia to Antarctica
Edition	1
Scale	1 : 68 000 000
Publication date	October 2015
Publisher	Australian Antarctic Division (Australia)
Spatial coverage	( 36.5833° -43.5833° ) , ( 175.7500° -43.5833° ) , ( 175.7500° -77.2333° ) ( 36.5833° -77.2333° )
Projection	Azimuthal Equidistant
Physical size	6.1 x 10 cm
Notes	Map produced for an article about the 2015/16 marine science voyage of the Australian Antarctic program in issue 29 of the Australian Antarctic Magazine.
Keywords	Kerguelen Plateau , K Axis , Topographic

### Downloads

This is a digital map available for downloading.

1: A print file (PDF)

### Preview



### Map extent



- Australia has completed scanning all Australian maps in their collection and made them available to download
- 2,291 Australian maps are available digitally



<https://data.aad.gov.au/aadc/mapcat/>

## SCAR Map Catalogue

[Search](#) [Map Lists](#) [Obtaining Maps](#) [Related Sites](#) [Publishers](#) [Uploads](#)

### Instructions for creating and validating a file for uploading into the SCAR Map Catalogue

1. Get login details by emailing [mapping@aad.gov.au](mailto:mapping@aad.gov.au)
2. Login [here](#) ...
3. When the map details have been added to the CSV file, check that the file will load correctly into the SCAR Map Catalogue by validating it [here](#).  
...
4. Email your validated CSV file to [mapping@aad.gov.au](mailto:mapping@aad.gov.au)
5. You will receive an email when your CSV file has been loaded. Please check that your maps have been successfully loaded.

- Search and save

Output Format

CSV