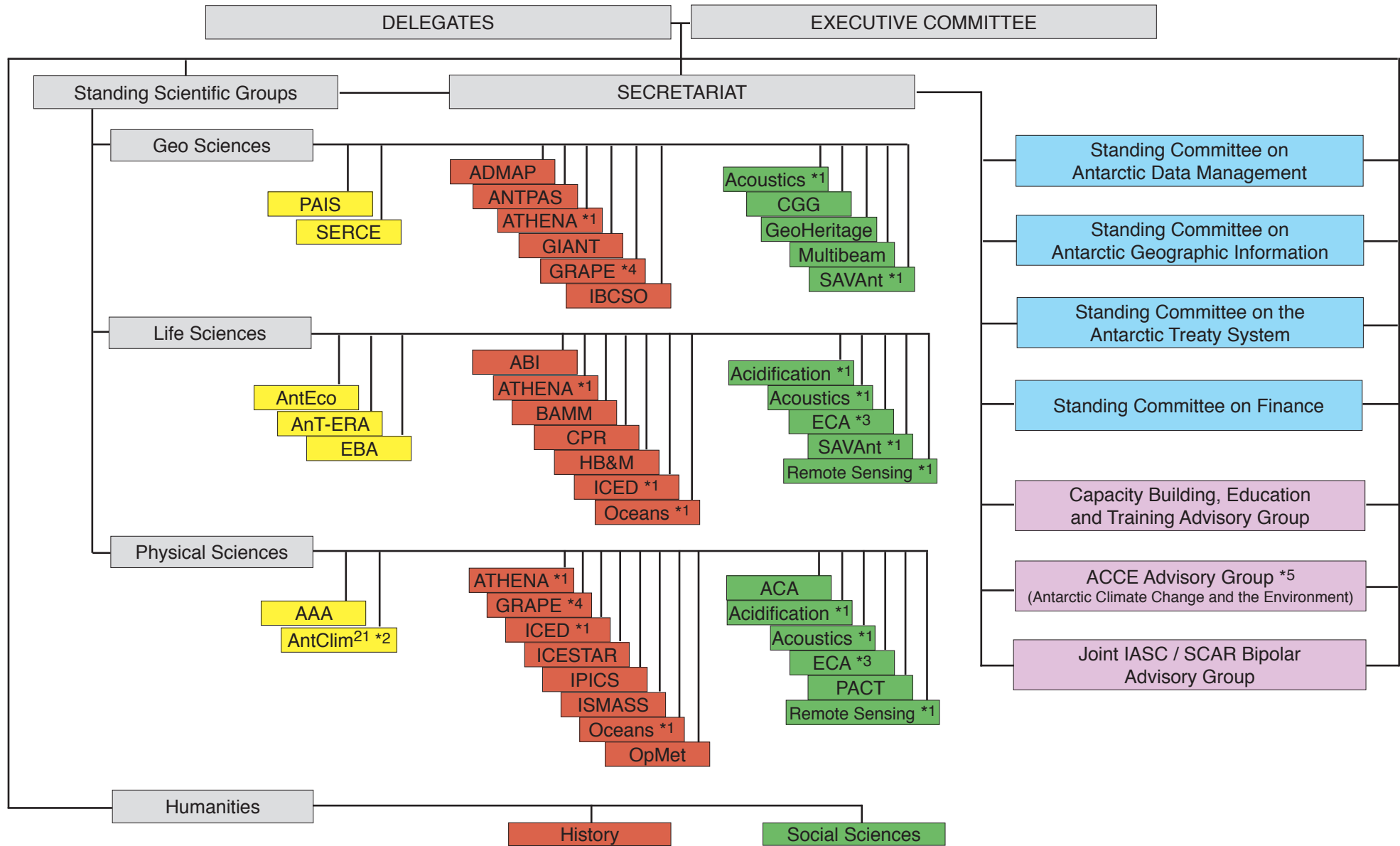


# The Organisation of the Scientific Committee on Antarctic Research (SCAR) (October 2012)



\*1 jointly sponsored  
 \*2 incorporates ASPeCt and ITASE  
 \*3 incorporates AGAFS  
 \*4 incorporates GWSWF  
 \*5 incorporates PCPBEA


For Acronyms, see below

 Scientific Research Programme Group

 Expert Group

 Action Group

 Standing Committee

 Advisory Group

## Acronym Definitions

AAA	Astronomy and Astrophysics from Antarctica
ABI	Antarctic Biodiversity Informatics (incorporates AntaBIF and MarBIN)
ACA	Antarctic Clouds and Aerosols
ACCE	Antarctic Climate Change and the Environment (incorporates PCPBEA)
Acidification	Southern Ocean Acidification
Acoustics	Acoustics in the Marine Environment
ADMAP	Antarctic Digital Magnetic Anomaly Project
AGAFS	Action Group on Antarctic Fuel Spills (now part of ECA)
AntClim <sup>21</sup>	Antarctic Climate Change in the 21 <sup>st</sup> Century (incorporates ASPeCt and ITASE)
AntEco	State of the Antarctic Ecosystem
AnT-ERA	Antarctic Thresholds - Ecosystem Resilience and Adaptation
ANTPAS	Antarctic Permafrost, Soils and Periglacial Environments
ASPeCt	Antarctic Sea Ice Processes and Climate (now part of AntClim <sup>21</sup> )
ATHENA	Advancing TechNological and ENvironmental stewardship for subglacial exploration in Antarctica
BAMM	Birds and Marine Mammals
CGG	Connecting Geophysics with Geology
COMNAP	Council of Managers of National Antarctic Programs (partner organisation)
CPR	Continuous Plankton Recorder
EBA	Evolution and Biodiversity in the Antarctic
ECA	Environmental Contamination in Antarctica (incorporates AGAFS)
GeoHeritage	Geological Heritage and Conservation
GIANT	Geodetic Infrastructure of Antarctica
GRAPE / WSWF	GNSS Research and Application for Polar Environment and Weather and Space Weather Forecast (incorporates GWSWF)
GWSWF	GPS for Weather and Space Weather Forecasting (now part of GRAPE)
HB&M	Human Biology and Medicine (joint Expert Group with COMNAP)
IASC	International Arctic Science Committee (partner organisation)
IBCSO	International Bathymetric Chart of the Southern Ocean
ICED	Integrating Climate and Ecosystem Dynamics in the Southern Ocean
ICESTAR	Inter-hemispheric Conjugacy Effects in Solar-Terrestrial and Aeronomy Research
IPICS	International Partnership in Ice Core Sciences
ISMASS	Ice Sheet Mass Balance and Sea Level
ITASE	International Trans-Antarctic Scientific Expedition (now part of AntClim <sup>21</sup> )
Multibeam	Multibeam Bathymetric Data Acquisition
Oceans	SCAR/SCOR Expert Group on Oceanography (now the SOOS Scientific Steering Committee)
OpMet	Operational Meteorology in the Antarctic
PACT	Polar Atmospheric Chemistry at the Tropopause
PAIS	Past Antarctic Ice Sheet Dynamics
PCPBEA	Prediction of Changes in the Physical and Biological Environment of the Antarctic (now part of ACCE)
Remote Sensing	Remote Sensing methodology used to promote new research
SAVAnt	Seeps And Vents Antarctica
SCOR	Scientific Committee on Oceanic Research (partner organisation)
SERCE	Solid Earth Response and influence on Cryosphere Evolution
SOOS	Southern Ocean Observing System